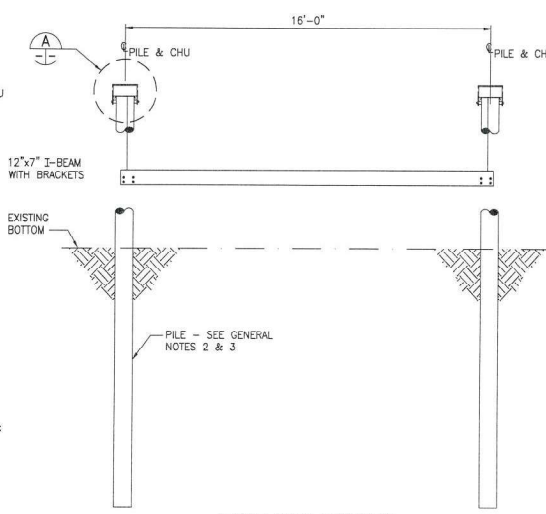
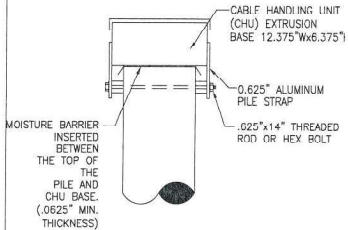


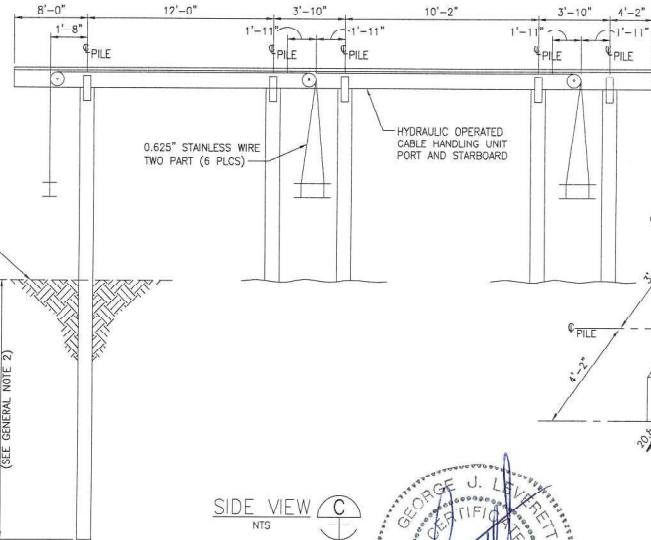
35,000 LB SERVICE PLATFORM LIFT
PLAN VIEW
NTS



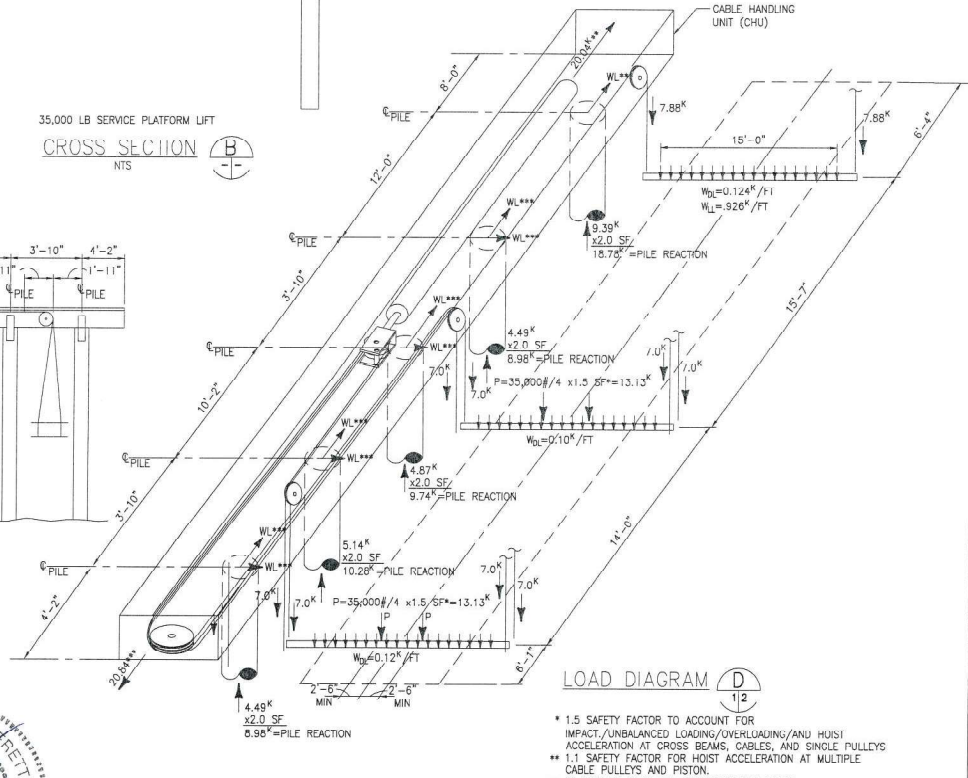
35,000 LB SERVICE PLATFORM LIFT
CROSS SECTION
NTS



PILE CONNECTION DETAIL
1'-1/2" x 1'-0"



SIDE VIEW
NTS



LOAD DIAGRAM
1/2

MPH	EXPOSURE (2)	WIND PRESSURE	PILE REACTIONS (5)	
			PERPENDICULAR TO CHU (3)	PARALLEL TO CHU (4)
180	C	51.8 PSF	1852#	778#
180	D	63.0 PSF	2361#	944#
170	C	46.2 PSF	1741#	694#
170	D	49.7 PSF	2106#	842#
160	C	41.0 PSF	1542#	614#
160	D	56.2 PSF	1885#	745#
150	C	36.0 PSF	1356#	540#
150	D	43.7 PSF	1639#	656#
140	C	31.4 PSF	1181#	470#
140	D	38.1 PSF	1428#	571#
130	C	27.0 PSF	1018#	406#
130	D	32.6 PSF	1231#	482#
120	C	23.0 PSF	816#	326#
120	D	28.0 PSF	1049#	420#

WIND LOADS
NTS

- NOTES:
1. THE ALUMINUM BOAT HOIST STRUCTURE HAS BEEN DESIGNED FOR 180 MPH, RISK CATEGORY II EXPOSURE D.
 2. EXPOSURE C APPLIES TO WATER EXPOSURE FOR AN UPWIND DISTANCE BETWEEN 1,500 AND 5,000 FEET. EXPOSURE D APPLIES TO WATER EXPOSURE FOR AN UPWIND DISTANCE OF 5,000 FEET OR GREATER.
 3. WIND SPEED APPLIED TO 400 SQUARE FOOT SURFACE AREA AND DISTRIBUTED TO 8 PILES SUPPORTING THE BOAT CRADLE.
 4. WIND PRESSURE APPLIED TO 200 SQUARE FOOT SURFACE AREA AND DISTRIBUTED TO 10 PILES.
 5. PERPENDICULAR & PARALLEL PILE REACTIONS ARE NOT APPLIED SIMULTANEOUSLY.

- GENERAL NOTES:
1. ALL HARDWARE TO BE STAINLESS STEEL UNLESS OTHERWISE NOTED.
 2. PILE MATERIAL, DIAMETER, AND DEPTH TO BE DETERMINED BY GEOTECHNICAL ENGINEER RETAINED BY THE GENERAL CONTRACTOR BASED ON LOCAL SOIL CONDITIONS.
 3. IF WOOD PILING IS USED, IT SHALL BE TREATED WITH 2.5lb CCA. IF STEEL PILING IS USED, A CATHODIC ISOLATION BARRIER SHALL BE PROVIDED BETWEEN THE STEEL PILE AND THE ALUMINUM CHU.
 4. APPROVED CONTRACTOR SHALL DETERMINE SUITABILITY OF THE EXISTING STRUCTURES AND VERIFY ALL DIMENSIONS.
 5. APPROVED CONTRACTOR IS RESPONSIBLE FOR ALL MEANS, METHODS, SEQUENCES AND PROCEDURES.
 6. LIFT DESIGNED PER FLORIDA BUILDING CODE 6TH EDITION (2017).
 - a) DECK LIVE LOAD = 60 PSF.
 - b) WIND LOAD - THE ALUMINUM BOAT HOIST STRUCTURE HAS BEEN DESIGNED PER ASCE 7-10 SOLID SIGN CRITERIA FOR 180 MPH, RISK CATEGORY II EXPOSURE D.
 - c) SEE TABLE FOR PILE REACTIONS FOR LATERAL WIND LOADS OF VARYING SPEEDS AND EXPOSURE CLASSIFICATIONS.
 - d) HOIST LIVE LOAD = 35,000 POUNDS



GEORGE J. LEVERETT
FLORIDA P.E. 38336

GEORGE J. LEVERETT PE
STRUCTURAL ENGINEERING, LLC
3606 RIVER HALL DRIVE JACKSONVILLE FL 32217
CERTIFICATE OF AUTHORIZATION No. 28761
(904) 923-5407

NO PROFILE BOAT LIFT		35,000 LB SERVICE PLATFORM	
SCALE: AS NOTED	APPROVED BY:	DRAWN BY: APR	
DATE: 01/01/18	OWNER:	REVISED:	
GEORGE J. LEVERETT, P.E. FL PE# 38336	ADDRESS:	WIND 35MPS, PDMA	